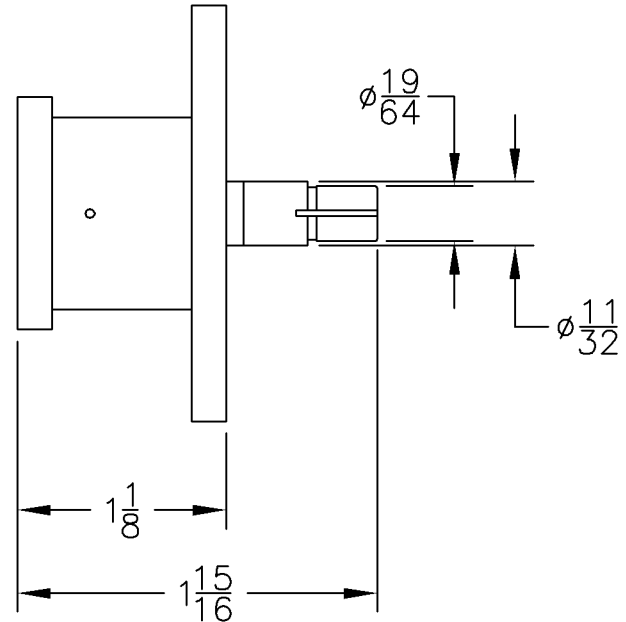
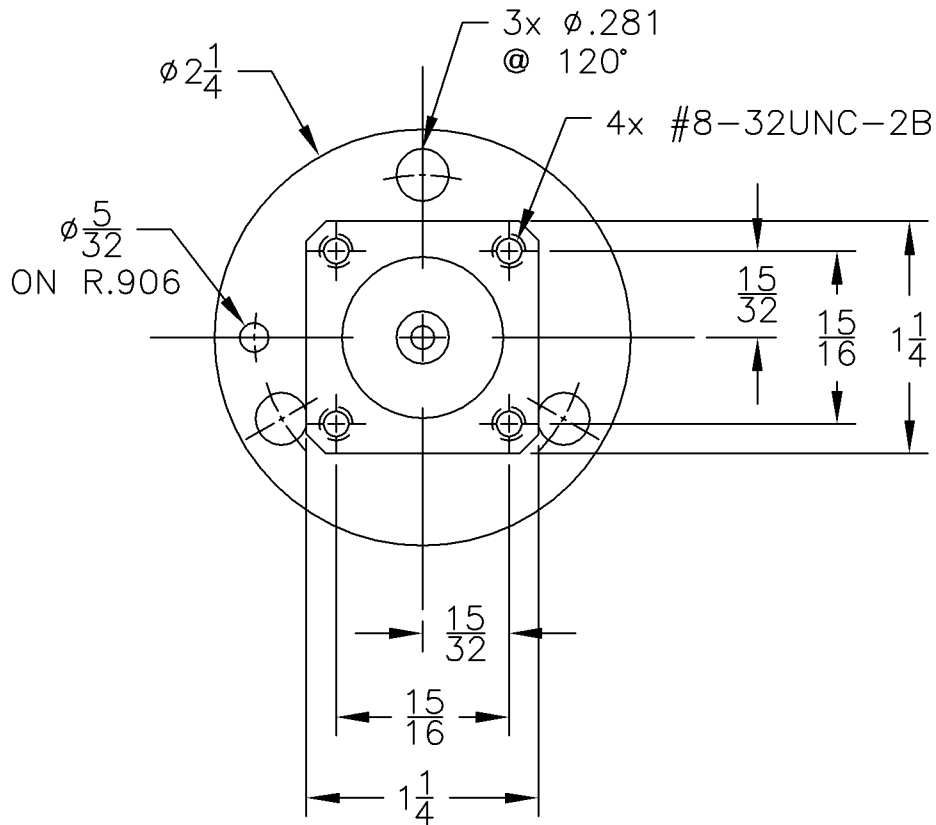


REVISIONS			DWG. NO.	OL4240-201	SHEET	REV
					1	C
ZONE	REV	DESCRIPTION	DATE	APPROVED		
	F	REMOVE STAMPING/ECO 12496 dmr	6-29-05	J.W. JW		

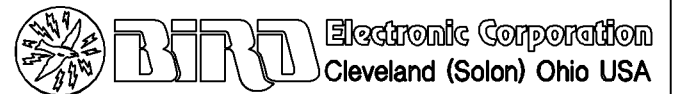


UNLESS OTHERWISE SPECIFIED
DIMENSIONS ARE IN INCHES
TOLERANCES ARE:

FRACTIONS	DECIMALS	ANGLES
$\pm 1/64$.XX = $\pm .010$	$\pm 30'$
	.XXX = $\pm .005$	

MILLIMETERS
.X = $\pm .4$
.XX = $\pm .12$

THIS DRAWING IS THE PROPERTY OF THE BIRD ELECTRONIC CORPORATION. THE DESIGNS AND SPECIFICATIONS DISCLOSED HEREON ARE PROPRIETARY AND SHALL NOT BE REPRODUCED, NOR COPIED, NOR USED AS THE BASIS FOR THE MANUFACTURE OR SALE OF APPARATUS OR DEVICES WITHOUT THEIR EXPRESS WRITTEN CONSENT.



DO NOT SCALE DRAWING

MATERIAL

FINISH

BRIGHT NICKEL PLATE

APPROVALS		DATE
DRAWN	K.L.A.	1-16-62
CHECKED	R.B.	1-24-62
APPROVED		
AUTOCAD		

TITLE			
OUTLINE, ADAPTER, 7/8" TO Q.C.			
SIZE	FSCM NO.	DWG. NO.	REV
A	70998	OL4240-201	C
SCALE	1:1	COMM CODE	SHEET
			1 OF 1