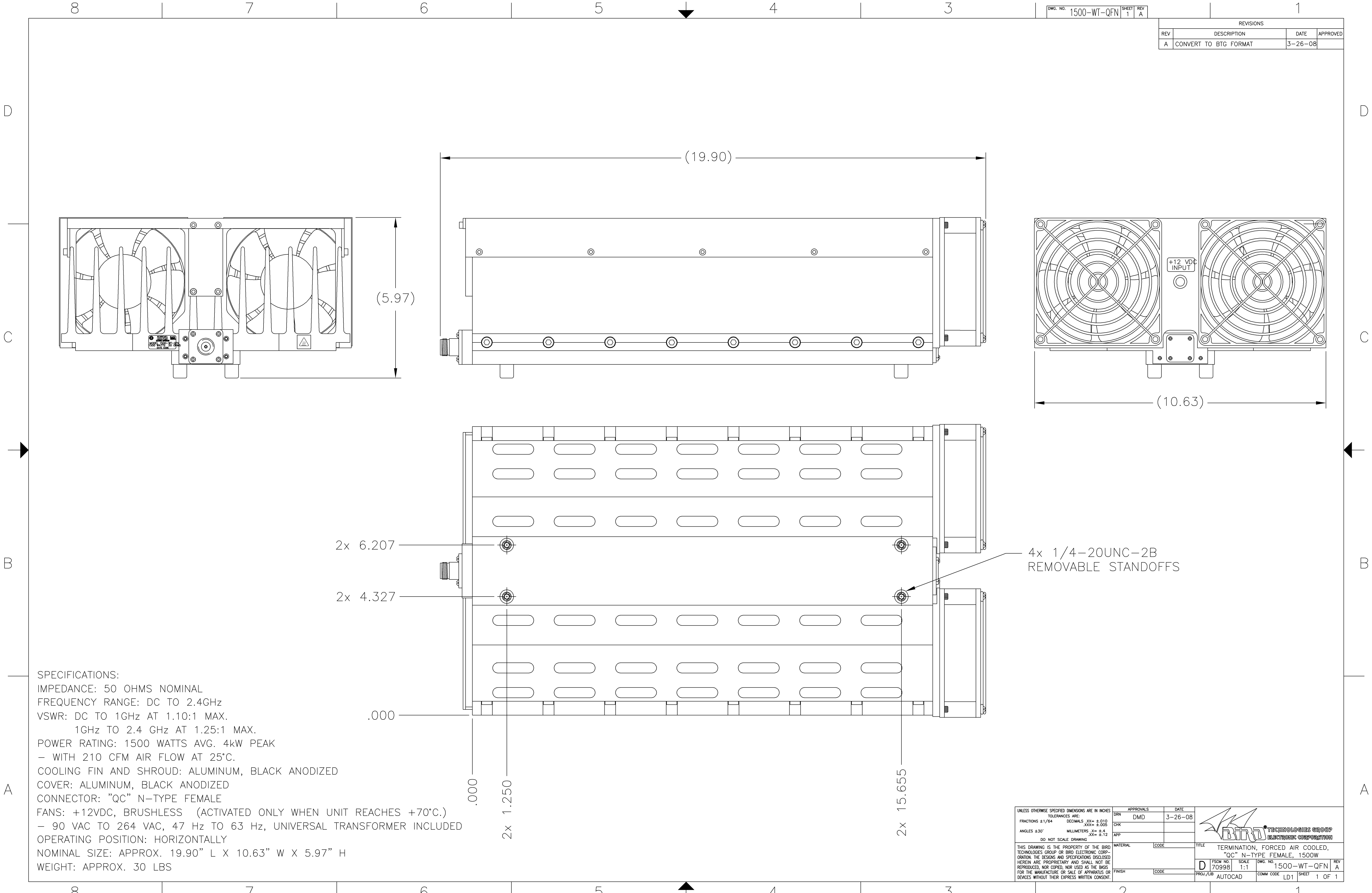


REVISIONS			
REV	DESCRIPTION	DATE	APPROVED
A	CONVERT TO BTG FORMAT	3-26-08	



SPECIFICATIONS:  
 IMPEDANCE: 50 OHMS NOMINAL  
 FREQUENCY RANGE: DC TO 2.4GHz  
 VSWR: DC TO 1GHz AT 1.10:1 MAX.  
 1GHz TO 2.4 GHz AT 1.25:1 MAX.  
 POWER RATING: 1500 WATTS AVG. 4kW PEAK  
 - WITH 210 CFM AIR FLOW AT 25°C.  
 COOLING FIN AND SHROUD: ALUMINUM, BLACK ANODIZED  
 COVER: ALUMINUM, BLACK ANODIZED  
 CONNECTOR: "QC" N-TYPE FEMALE  
 FANS: +12VDC, BRUSHLESS (ACTIVATED ONLY WHEN UNIT REACHES +70°C.)  
 - 90 VAC TO 264 VAC, 47 Hz TO 63 Hz, UNIVERSAL TRANSFORMER INCLUDED  
 OPERATING POSITION: HORIZONTALLY  
 NOMINAL SIZE: APPROX. 19.90" L X 10.63" W X 5.97" H  
 WEIGHT: APPROX. 30 LBS

UNLESS OTHERWISE SPECIFIED DIMENSIONS ARE IN INCHES		APPROVALS		DATE
TOLERANCES ARE:		DRN	DMD	3-26-08
FRACTIONS ±1/64	DECIMALS .XX ±.010	CHK		
	XXX ±.005	APP		
ANGLES ±30°	MILLIMETERS .XX ±.4			
	XX ±.12			
DO NOT SCALE DRAWING				
MATERIAL		FINISH		CODE
TITLE		SCALE		REV
TERMINATION, FORCED AIR COOLED, "QC" N-TYPE FEMALE, 1500W		1:1		A
D		70998		1500-WT-QFN
AUTOCAD		LD1		1 OF 1